



Philips Zymed Holter Family



EASI* does it
in every application

PHILIPS

Think small realize grand



When the patients are children, the Philips Zymed Holter family has you and them covered. For the test, DigiTrak Plus is easily secured with a lanyard and rugged enough to withstand a child's normal routine. During analysis, you have the editing tools to ensure accuracy.



DigiTrak Plus is water-resistant so your patients can go about their normal daily routine worry-free and you aren't faced with constantly replacing damaged devices.

Simple and sophisticated

Philips Zymed DigiTrak Plus is tiny to hold, light to wear and virtually impossible to damage.

About the size of a pager, DigiTrak Plus weighs just 90 grams (3.2 ounces), including battery and flashcard. Patient tests can run 24 to 48 hours on a single AA battery. Since the flashcard is not removable it never gets lost or damaged.

Attaching leads is easy for you and your patients. The DigiTrak Plus LCD lets you check the quality of electrode connections as you place them, and it displays the ECG. No additional hardware is required.

From the five EASI electrodes, three channels of ECG are provided plus you get pacemaker software with adjustable sensitivity for pacing artifact. Downloading patient tests is easier than ever with the DigiTrak Plus Docking Station, which

remains connected to your computer, so all you need to do is slip the recorder in place and go. Microsoft XP Signature ensures that DigiTrak Plus is automatically recognized by your PC, further simplifying the process.

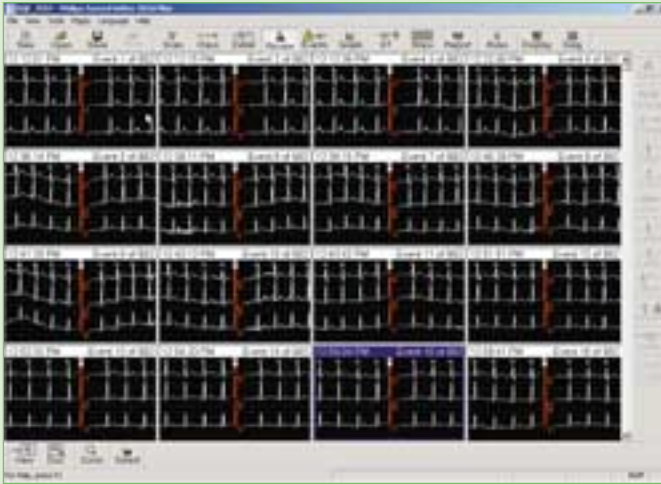
Your Philips Holter software application will work with a PC running Microsoft Windows XP, 2000, 98 or ME. Ask your Philips representative for other minimum and recommended specifications.

Choose your style.

- Retrospective
- Superimposition
- Paging
- QuickScan

Philips Holter analysis applications are designed to save time, lower costs and improve an operator's ability to process even the most difficult exams.

performance



Validate 1000 events in less than 30 seconds with Event Review, saving time and eliminating the tedious, eye-glazing review of one event at a time.

QuickScan, only from Philips

QuickScan gives the operator the tools to rapidly analyze any test, including those most difficult to process:

- bundled branch blocks
- atrial fibrillation
- pacemakers
- pediatric

The combination of automatic processing with the Auto Stop feature gives QuickScan its impact — rapid processing and effective editing so an operator can correct a mistake one time instead of thousands of times.

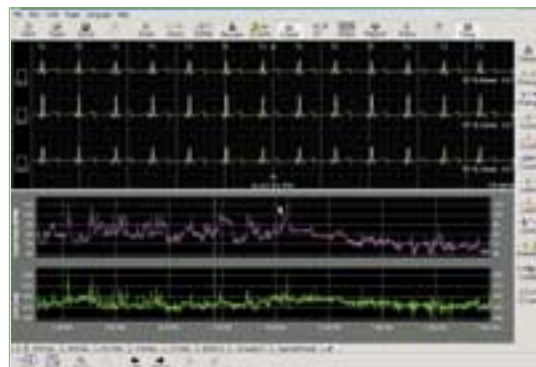
Every patient and test is different, so it makes no sense to limit you to a single scanning style — and with Philips there are no such limits.

At the entry-level, Philips Zymed 1810 Series offers retrospective scanning and a 30-minute page preview, which gives the operator the flexibility to adjust the algorithm for artifact or complex arrhythmia. Choose an application beyond the basic 1810 and you have even more flexibility. Select the interactive or automatic style that best meets the challenges of each test. Start with Superimposition, Paging or the exclusive Philips Zymed QuickScan and switch between them as needs require during the analysis.

Autostops, part of the Paging, Superimposition and QuickScan modes, present examples of complex arrhythmias, including ventricular tachycardia and atrial pauses, and identify computer mistakes in artifact. The ability to correct the mistake once and have it update the entire study saves time and improves accuracy.



If superimposition is your scanning style of choice, Philips has it.



With QT Interval Analysis, you get a beat-by-beat view and fiducial points are shown, ensuring accuracy.

Access and analyze as you choose

For a small office with low testing volume, a service provider scanning hundreds of tests a day, and every size organization in between, Philips has a solution that works the way you do. Add the capabilities you need, as you need them — or go straight for premier performance with the Philips Zymed 2010 *plus*.

The Report Viewer/Editor is standard on each application, offering controlled access and editing so you can connect to patient records as quickly and easily as if they were on your hard drive.

For an open, secure and scalable solution for centralizing Holter analysis, Philips offers Remote Link and Central Link to decrease the time and cost to complete reports, reduce staff training and equipment maintenance costs and improve access to reports across LAN, WAN and email.

Philips Zymed Remote Link and Central Link offer a streamlined process for centralized Holter analysis.

Philips 1810 Series Holter Software

- A fully automated solution, requiring limited operator interaction
- Retrospective scanning
- 30-minute ECG preview gives an operator the ability to adjust the algorithm for artifact or complex arrhythmia
- EASI for arrhythmia and ischemia

Philips 1810 Series with Technical Suite

- Supports all scanning styles
- Includes 24/48 HR paging and HRV frequency
- Provides remote site connections

Philips 1810 Series with Technical and Cardiology Suites

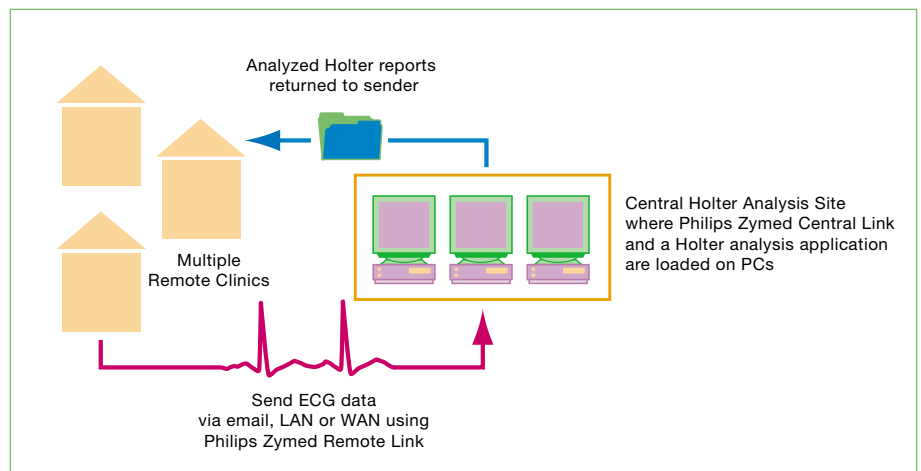
- Perform pacemaker analysis
- Prepare reports with multiple 3D views of the heart
- Customize the analysis tools
- User-defined alarm protocols

Philips 1810 Series with Technical and Administrative Suites

- Unlimited remote access capability
- Link to your color laser printer
- Create custom reports with your institution's logo

Philips 2010 plus

- Includes all the capabilities of the basic 1810 and the Administrative, Technical and Cardiology suites

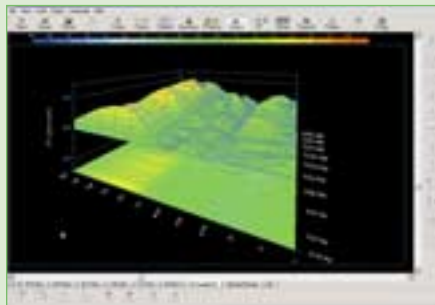


Export 24 or 48 hours of EASI ECG from the Philips IntelliVue Information Center to a Philips Holter analysis application to check for arrhythmia, ischemia or to assess response to a new drug therapy. Plus, timely confirmation of a normal Holter test can lead to a faster patient discharge.

*Philips Zymed Holter family.
For patient privacy and convenience,
clinical quality and effectiveness,
there is no better choice.*



As small and easy to wear as a pager, the Philips Zymed DigiTrak Plus weighs just 90 grams (3.2 ounces).



With Philips Zymed 2010 plus, and the Cardiology Suite on the 1810 Series, you can see multiple three-dimensional (3D) views of the heart, including ST 3D analysis shown here.

Monitoring

Being small is a big factor when it comes to Holter monitors.

A patient wants a tiny, lightweight monitor to wear discreetly and Philips Medical Systems delivers.

But the real distinction of the Philips Zymed DigiTrak Plus is the power and ease-of-use packed in its pager-like footprint — and that starts with the power of EASI 12-lead from just five electrodes.

The ability to record and analyze an EASI 12-lead means you can see wide-complex rhythms and ischemic episodes in all twelve leads for the entire patient test. That's not just more information, that's higher quality information.

Also, since DigiTrak Plus records at 175 samples per second and stores without data compression you know

you are getting *all* the information you need to make better informed diagnostic decisions.

Analysis

For Holter analysis, Philips has solutions to match every budget and clinical requirement — and all offer EASI 12-lead and are virtually maintenance-free.

Whether yours is a small office or large research center, hospital cardiology department or service provider, choose the capabilities you need.

Communications

And when it makes sense to have centralized Holter recording analysis and report access, count on Philips Zymed communications software to eliminate the delay and costs associated with couriers and overnight shipping.

Philips Zymed Holter Software

Each Philips Zymed Holter Analysis software application is as simple to install, use and maintain as a word processing package.

The faster your computer, the faster throughput you can expect.

You can also expect:

Lower cost of ownership

- Simply install the Philips software on a PC you own that meets the minimum specifications.

No unexpected service costs or delays

- If your PC has a problem, simply transfer your Holter software and hard lock to another computer and you're back to work with no delays or unexpected service costs.

Ease of use

- Knowing how to use Microsoft Windows is all it takes to be able to analyze Holter exams using Philips applications.

Philips Medical Systems is part of Royal Philips Electronics

Interested?

Would you like to know more about our imaginative products? Please do not hesitate to contact us. We would be happy to provide specific information about our products and services, or put you on our mailing list for news about new product developments, upcoming events or for our clinical journal, *MedicaMundi*.

On the web

www.medical.philips.com

Via e-mail

medical@philips.com

By fax

+31 40 27 64 887

By postal service

**Philips Medical Systems
Global Information Center
P.O. Box 1168
5602 BD Eindhoven
The Netherlands**

* EASI derived 12-Lead ECGs should not be used to diagnose myocardial infarction as the amplitude measurements are only approximations to 12-lead ECGs.



**Philips Medical
Systems is part
of Royal Philips
Electronics**
www.medical.philips.com

Philips Medical Systems N.A.
Bothell, Washington
888 647 4285

© Koninklijke Philips Electronics
N.V. 2004
All rights are reserved.
Reproduction in whole or in part
is prohibited without the prior
written consent of the copyright
holder.

Philips Medical Systems Nederland
B.V. reserves the right to make
changes in specifications and/or to
discontinue any product at any
time without notice or obligation
and will not be liable for any con-
sequences resulting from the use
of this publication.

Printed in The Netherlands
4522 981 99631/860 * DEC 2004